

Static Dimensioning and Weighing Solution

Powerful dimensioning and weighing solution, enables you to measure boxes or products of different shapes in a fast and efficient way to maximize warehouse space.

DX 1000-i

- ✓ The DX1000-i includes a dimensioning system and a 24" x 24" surface, all assisted with a 1D/2D barcode reader.
- ✓ The DX1000-i utilizes proven and reliable components. This makes maintenance simple and easy.
- ✓ The DX1000-i is capable of reading, measuring, cubing, and weighing products to transmit the information efficiently to your ERP / WMS / TMS.
- ✓ The DX1000-i is a flexible solution for inventory data collection. Much faster and more reliable than manual measurement, the solution is essential to help the shipping department. Thanks to its touchscreen application, the system is easy to use.
- ✓ This solution is suitable for various applications such as order preparation, shipping and cubing of your shelves. It handles products of different shapes and sizes.



Sturdy Design

The DX1000's housing and stand are made of anodized aluminum. They are therefore corrosion resistant and ensure a long life.



Simplicity

The solutions are simple, allow quick integration and ease of operation. Simplicity that translates into design, maintenance and use.



Multiple Applications

Whatever the product, we analyse and suggest the best way to apply your label.

General Specifications

Characteristics:

- Anodized aluminum construction
- Easy-to-use interface
- Possible object shape: rectangular boxes or irregularly shaped products
- Operating speed: 1 to 2 seconds per measurement
- Personalized connection to your information system

Performances:

- Measurement Fields:
- Length: 0.5" (13mm) to 24" (610mm)
- Width: 0.5" (13mm) to 24" (610mm)
- Height: 0.5" to 36" (915mm)
- Capacity: 100 lbs (45 kg)
- Resolution: 0.05 lbs (0.02kg)



Touch-screen interface



Interface/indicator scale

Technical Specifications

Standards characteristics of DX1000-i

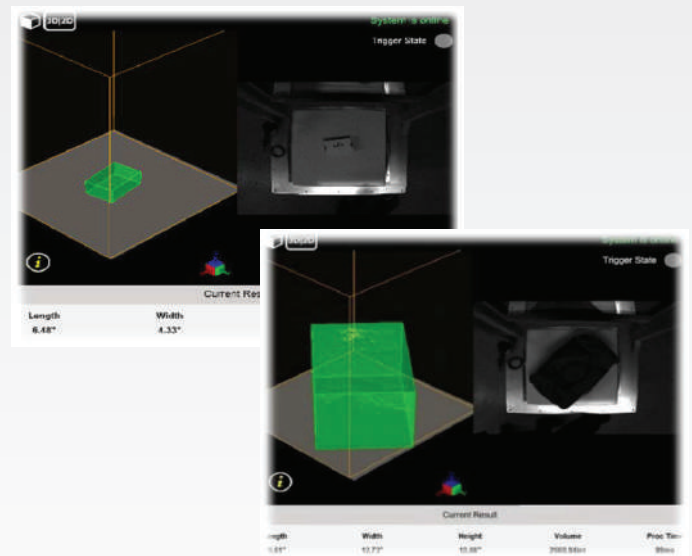
- Electricity: 110 volts, 10 AMP
- Reading surface: 24" x 24"
- Data output: According to your needs
- Gravimetric sensors: Load cell
- Width: 36" (910mm)
- Length: 30" (760mm)
- Height: 101" (2586mm)
- Weight: 200 lbs (91kg)

Options and customization

We can add some devices to the basic configuration, to solve specific challenges.

Warranty

1 year, parts and labor (return to depot)
** The **DX1000** can be covered by our warranty **EXASmart One™**.



Measuring/weighing different sized items

**Tap into our team's
expertise —
request your free
consultation today.**