

The warehouse industry is changing. Can your operations keep pace?

76%

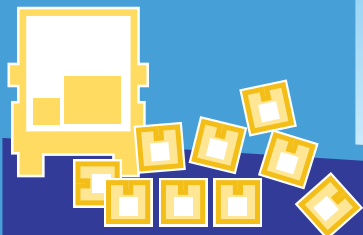
increase
in volume of
items ordered
by 2020 ¹

83%

increase
in items shipped
by 2021 ¹

89%

of executives
agree e-commerce
is driving the need
for faster delivery ²



Legacy mobile devices

Not made for the pace of e-commerce



Outdated Windows® mobile operating systems, developed long before the e-commerce revolution, can't handle today's fulfillment demands and security risks.

Downtime



- Slower task completion
- Less intuitive, green screen push-button devices
- Battery change prompts cold reboot that creates downtime, lost productivity
- Lack of replacement parts leads to retired devices and slower operations

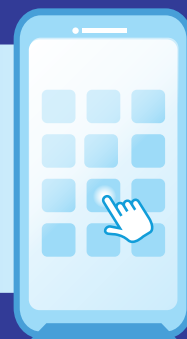
Hamper training efforts



Longer training cycles due to a slow, unfamiliar interface and cumbersome navigation costs valuable time.

Zebra Android devices

Accelerates e-commerce fulfillment



Modern Android operating systems are built for today's on-demand economy and offer up to seven years of security support, making them the best choice for daily operations.

Uptime

- 40% faster data entry and 60% fewer errors with touch screen ³
- Fast charging, hot swap batteries keep devices running
- Readily available replacement parts help maintain business continuity.



Enhance training efforts

Slash training time with a user interface that's already familiar to workers.



Contact OCR Canada and learn how to seize new warehouse opportunities with Zebra Android.



www.ocr.ca/contact | connect@ocr.ca | 800.853.7226
www.zebra.com/us/en/resource-library/webinars.html



1. Warehousing 2020 Vision Study, Zebra Technologies, 2016 2. The Future of Fulfillment Vision Study, Zebra Technologies, 2018 3. In tests using TC8000 versus traditional push-button devices

ZEBRA and the stylized Zebra head are trademarks of Zebra Technologies Corp., registered in many jurisdictions worldwide. All other trademarks are the property of their respective owners. ©2021 Zebra Technologies Corp. and/or its affiliates.